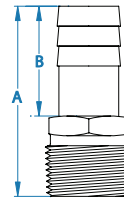


STAINLESS STEEL AND BRONZE THRU-HULL FITTINGS

PTH-S, STANDARD FLOW #316 SS

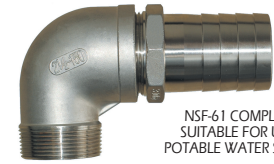
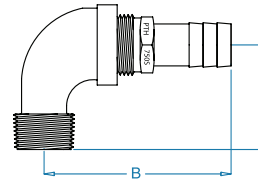
MODEL NO.	THREAD NPT	HOSE ID inch	A inch	B inch	WEIGHT lb	PKG
PTH-750-S	3/4"	3/4"	2.56	1.50	.26	1
PTH-1000-S	1"	1"	2.95	1.70	.41	1
PTH-1250-S	1-1/4"	1-1/4"	3.35	2.10	.57	1
PTH-1500-S	1-1/2"	1-1/2"	3.54	2.20	.77	1
PTH-2000-S	2"	2"	3.94	2.60	1.29	1
PTH-2500-S	2-1/2"	2-1/2"	4.73	2.80	2.30	1
PTH-3000-S	3"	3"	5.12	3.20	3.12	1



NSF-61 COMPLIANT.
SUITABLE FOR USE IN
POTABLE WATER SYSTEMS.

PTHC-S, STANDARD FLOW #316 SS

MODEL NO.	THREAD NPT	HOSE ID inch	A inch	B inch	WEIGHT lb	PKG
PTHC-750-S	3/4"	3/4"	1.31	2.97	.51	1
PTHC-1000-S	1"	1"	1.50	3.40	.79	1
PTHC-1250-S	1-1/4"	1-1/4"	1.75	4.00	1.20	1
PTHC-1500-S	1-1/2"	1-1/2"	1.93	4.40	1.62	1
PTHC-2000-S	2"	2"	2.25	5.00	2.61	1
PTHC-2500-S	2-1/2"	2-1/2"	2.68	6.25	4.69	1
PTHC-3000-S	3"	3"	3.06	7.00	6.50	1



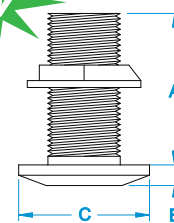
NSF-61 COMPLIANT.
SUITABLE FOR USE IN
POTABLE WATER SYSTEMS.

AVAILABLE WITH BSPP OR NPS THREADS

TH, STANDARD LENGTH THRU-HULLS BRONZE AND SS

THREAD BRONZE NPS	THREAD BRONZE BSPP	THREAD #316 SS NPS	THREAD NPS/BSPP	A inch/mm	B inch/mm	C inch/mm	WEIGHT* lb/kg	PKG
TH-500-W	TH-50-W	TH-500-WS	1/2"	2.20/55.9	.30/7.62	1.70/43.18	0.40/0.18	10
TH-750-W	TH-75-W	TH-750-WS	3/4"	2.20/55.9	.30/7.62	1.90/48.26	0.50/0.23	10
TH-1000-W	TH-100-W	TH-1000-WS	1"	2.85/72.4	.30/7.62	2.32/58.93	0.70/0.32	10
TH-1250-W	TH-125-W	TH-1250-WS	1-1/4"	2.90/73.7	.30/7.62	2.62/66.55	1.20/0.54	12
TH-1500-W	TH-150-W	TH-1500-WS	1-1/2"	3.15/80.0	.30/7.62	2.89/73.41	1.50/0.68	12
TH-2000-W	TH-200-W	TH-2000-WS	2"	3.90/99.1	.30/7.62	3.33/84.58	1.90/0.86	1
TH-2500-W	TH-250-W	TH-2500-WS	2-1/2"	3.56/90.4	.42/10.67	4.40/111.76	3.80/1.72	1
TH-3000-W	TH-300-W	TH-3000-WS	3"	4.00/101.6	.42/10.67	5.50/139.70	6.00/2.72	1
TH-4000-W	TH-400-W	-	4"	5.31/134.9	.56/10.67	7.00/177.80	13.20/5.99	1
TH-5000-W	-	-	5"	5.34	.57	8.18	18.50	1

*Weight is with nut.



ISO 9093-1
CERTIFIED



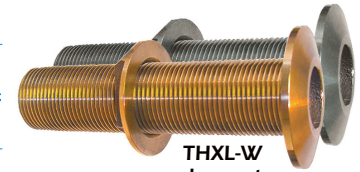
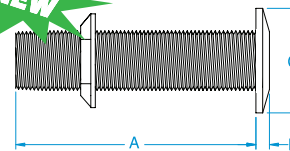
TH-W
has nut

For installations where hull thickness dictates the use of a longer fitting.

THXL, EXTRA-LENGTH THRU-HULLS BRONZE

BRONZE	#316 SS	THREAD NPS	A inch	B inch	C inch	WEIGHT* lb	PKG
THXL-750-W	THXL-750-WS	3/4"	5.33	0.30	1.90	0.75	10
THXL-1000-W	THXL-1000-WS	1"	5.33	0.30	2.32	1.00	1
THXL-1250-W	THXL-1250-WS	1-1/4"	5.45	0.30	2.62	1.75	1
THXL-1500-W	THXL-1500-WS	1-1/2"	5.45	0.30	2.89	2.12	1
THXL-2000-W	THXL-2000-WS	2"	5.58	0.30	3.34	2.52	1

*Weight is with nut.

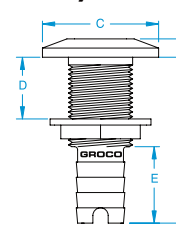


THXL-W
has nut

BRONZE	#316 SS	THREAD NPS	HOSE ID inch	A inch	B inch	C inch	D* inch	E inch	WEIGHT BRONZE/SS lb	PKG
HTH-500	HTH-500-S	1/2"	1/2"	2.7	0.3	1.7	1.1	1.3	0.4/0.4	10
HTH-625	HTH-625-S	3/4"	5/8"	2.7	0.3	1.9	1.1	1.3	0.5/0.4	10
HTH-750	HTH-750-S	3/4"	3/4"	2.7	0.3	1.9	1.2	1.3	0.6/0.6	10
HTH-1000	HTH-1000-S	1"	1"	2.8	0.3	2.3	1.2	1.3	0.9/0.8	10
HTH-1125	HTH-1125-S	1"	1-1/8"	2.8	0.3	2.3	1.2	1.3	1.1/1.0	10
HTH-1250	HTH-1250-S	1-1/4"	1-1/4"	2.8	0.3	2.6	1.1	1.3	1.2/1.1	12
HTH-1500	HTH-1500-S	1-1/2"	1-1/2"	2.8	0.3	2.9	1.1	1.3	1.5/1.3	12
HTH-2000	HTH-2000-S	2"	2"	2.8	0.3	3.3	1.1	1.3	2.0/1.8	4

*Maximum hull thickness.

HTH, HOSE THRU-HULLS BRONZE AND SS

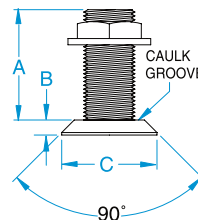


HTH-W
has nut

MODEL NO.	THREAD NPS	A inch	B inch	C inch	WEIGHT* lb	PKG
FTH-500-W	1/2"	2.31	.30	1.75	.38	10
FTH-750-W	3/4"	2.31	.30	2.00	.50	10
FTH-1000-W	1"	2.56	.30	2.32	.88	10
FTH-1250-W	1-1/4"	3.31	.30	2.93	1.38	12
FTH-1500-W	1-1/2"	3.50	.30	3.20	2.00	12
FTH-2000-W	2"	3.56	.35	3.90	2.75	1
FTH-2500-W	2-1/2"	3.56	.42	4.40	3.75	1
FTH-3000-W	3"	5.00	.42	5.50	6.00	1
FTH-4000-W	4"	5.31	.56	7.00	13.20	1
FTH-5000-W	5"	5.34	.57	8.18	18.50	1

*Weight is with nut. Order FTH-XXXX-L if nut is not required.

FTH, FLUSH THRU-HULLS BRONZE



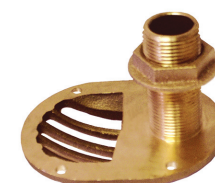
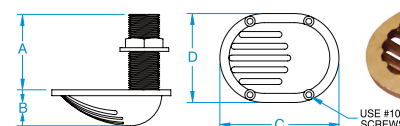
FTH-W
has nut

AVAILABLE WITH BSPP OR NPS THREADS

STH, SCOOP THRU-HULLS BRONZE

THREAD NPS	THREAD BSPP	THREAD NPS/BSPP	A inch/mm	B inch/mm	C inch/mm	D inch/mm	WEIGHT lb/kg	PKG
STH-500-W	STH-50-W	1/2"	2.20/55.88	1.05/26.67	3.28/83.31	2.55/64.77	.70/0.4	1
STH-750-W	STH-75-W	3/4"	2.20/55.88	1.05/26.67	4.00/101.60	3.05/77.47	.95/0.5	1
STH-1000-W	STH-100-W	1"	2.85/72.39	1.05/26.67	4.00/101.60	3.05/77.47	1.25/0.6	1
STH-1250-W	STH-125-W	1-1/4"	2.90/73.66	1.20/30.48	4.30/109.22	3.35/85.09	1.75/0.8	1
STH-1500-W	STH-150-W	1-1/2"	3.15/80.01	1.30/33.02	4.83/122.68	3.50/88.90	2.25/1.0	1
STH-2000-W	STH-200-W	2"	3.60/91.44	1.50/38.10	5.75/146.05	4.00/101.60	3.50/1.6	1
STH-2500-W	STH-250-W	2-1/2"	3.20/81.28	2.25/57.15	7.85/199.39	5.85/148.59	5.50/2.5	1

Order STH-L if nut is not required.



STH-W
has nut

USE #10
SCREWS